

ADMINISTRATOR

Opportunity Plan, Inc. • 504 24th St. • P.O. Box 1035 • Canyon, Texas 79015-1035 • 806-655-2528
www.opportunityplan.com

GOLDEN SPREAD MEMBER SYSTEMS

Bailey County Electric Cooperative

610 E. American Blvd. • P.O. Box 1013
Muleshoe, Texas 79347-1013
806-272-4504

Big Country Electric Cooperative

1010 West South First Street
P.O. Box 518
Roby, Texas 79543-0518
325-776-2244

Coleman County Electric Cooperative

3300 N. Highway 84 • P.O. Box 860
Coleman, Texas 76834-0860
325-625-2128

Concho Valley Electric Cooperative

2530 Pulliam Street
P.O. Box 3388
San Angelo, Texas 76902
325-655-6957

Deaf Smith Electric Cooperative

1501 E. First St. • P.O. Box 753
Hereford, Texas 79045-0753
806-364-1166

Greenbelt Electric Cooperative

706 10th Street • P.O. Box 948
Wellington, Texas 79095-0948
806-447-2536

Lamb County Electric Cooperative

2415 South Phelps Avenue
Littlefield, Texas 79339-5699
806-385-5191

Lighthouse Electric Cooperative

Highway 70 East • P.O. Box 600
Floydada, Texas 79235-0600
806-983-2814

Lyntegar Electric Cooperative

1701 U.S. Highway 87 • P.O. Box 970
Tahoka, Texas 79373-0970
806-561-4588

North Plains Electric Cooperative

14585 U.S. Highway 83 North
P.O. Box 1008
Perryton, Texas 79070-1008
806-435-5482

Rita Blanca Electric Cooperative

12198 U.S. Highway 87 • P.O. Box 1947
Dalhart, Texas 79022-5947
806-249-4506

South Plains Electric Cooperative

4727 S. Loop 289, Suite 200
P.O. Drawer 1830
Lubbock, Texas 79408-1830
806-775-7732

Southwest Texas Electric Cooperative

101 East Gillis • P.O. Box 677
Eldorado, Texas 76936-0677
325-853-2544

Swisher Electric Cooperative

401 SW 2nd Street • P.O. Box 67
Tulia, Texas 79088-0067
806-995-3567

Taylor Electric Cooperative

226 CR 287 • P.O. Box 250
Merkel, Texas 79536
325-793-8500

TCEC

4612 Road J • P.O. Drawer 880
Hooker, Oklahoma 73945-0880
580-652-2418



**Golden Spread
Electric Cooperative, Inc.**

A Touchstone Energy™ Cooperative 

905 S. Fillmore Street, Suite 300 • P.O. Box 9898 • Amarillo, Texas 79105-5898
806-379-7766 • www.gsec.coop

Directors Memorial Scholarship



**Golden Spread
Electric Cooperative, Inc.**

A Touchstone Energy™ Cooperative 

THE FOUNDER

Golden Spread Electric Cooperative, Inc. of Amarillo, Texas, a generation and transmission cooperative owned by 15 Texas and one Oklahoma electric distribution cooperatives, founded The Scholarship in 1991 with an initial contribution in memory of James T. Hull. Continuing contributions by Golden Spread and various individuals provide additional capital for The Scholarship fund. The Founder intends that the names of other Golden Spread directors who have been faithful stewards for the Golden Spread Cooperative family be included in those remembered.

THE MEMORIAL

Formed in memory of individuals who were dedicated to the development and advancement of rural electrification for the benefit of their Member Consumers, The Scholarship provides financial assistance to electric cooperative family members seeking a college or university education.

ELIGIBILITY

The Scholarship is available to an entering freshmen college or university student who is a Member, or spouse or child of a Member, or child whose guardian is a Member of a rural electric cooperative which is an owner (Member) of Golden Spread Electric Cooperative. The deadline to submit an application is **March 1st**.

The Scholarship is \$2000, payable \$500 for each of four semesters through the sophomore year. Satisfactory scholastic performance and appropriate personal standards must be maintained for continuing eligibility. Students must possess the qualities of honor, integrity, thrift, good moral character and a sincere desire to achieve their educational goals. Grades are not the sole criteria in awarding The Scholarship, however, may determine the final award if all other things are found equal by the Selection Committee. Selected recipients will be posted by May 15th on the Golden Spread Electric Cooperative website.

PURPOSE

The Scholarship provides financial assistance for qualified individuals who are seeking a college or university education.

QUALIFYING SCHOOLS

Candidates must be enrolled as a full-time student in an accredited college or university in the states of Texas or Oklahoma.

SCHOLARSHIP SELECTION COMMITTEE

The Scholarship Selection Committee is the Executive Committee of Opportunity Plan, Inc., along with one individual designated by the Board of Directors of Golden Spread Electric Cooperative.

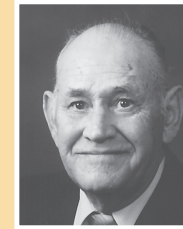
APPLICATIONS

Applications are available at Golden Spread Electric Cooperative, at the offices of each of its member systems, and on the website: www.gsec.coop.

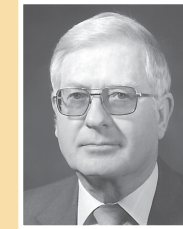
THOSE REMEMBERED



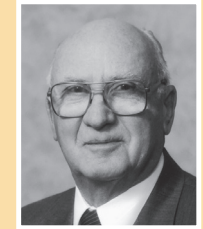
James T. Hull
Deaf Smith



Dwight Hutchison
North Plains



Connie Gupton
Bailey County



Guy F. Kelley
Bailey County



Larry M. Lockwood
Lamb County



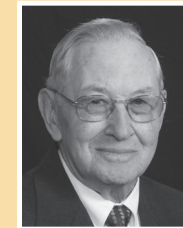
J.C. (Jim) Roberts
South Plains



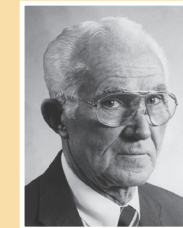
Weldon Gray, P.E.
Concho Valley



Robert "Bobby" Green
Rita Blanca



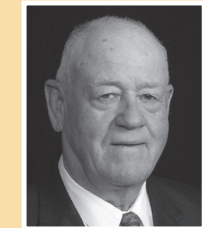
Kenneth Mathews
Greenbelt



Richard "Dick" Montgomery
Deaf Smith



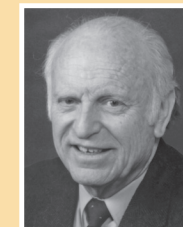
Louis Lloyd
Lighthouse



Clark Andrews
Deaf Smith



Jim Payne
Lyntegar



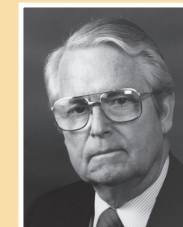
Lyle M. Robinson
Swisher



Duane Lloyd
Bailey County



Stephen R. Louder
Deaf Smith



John E. Norman
TCEC



Jimmy C. Stokes
Rita Blanca